

GRATITUDE REPORT 2025



Transforming
trauma into a
force for good





CONTENTS

Letter from Tammie Ritchey	3
Thank you from Dr. Coopwood	4
Financials	8
Employee Story: Karla Arnold	10
Staff Highlight: Jehan Ellis	12
Donor Impact: ONE Health	14
Patient Story: Aiden Neldon	16
ONE Campus	19
Physician Highlight: Dr. Schorge	20
Annual Events	24
Employee Giving	30
About Regional One Health	31
History of Planned Giving	32
Honor Roll	34
Why Give?	35

THANK YOU FOR HELPING BUILD TOMORROWS

For more than 195 years, Regional One Health has stood as Memphis’s unwavering champion—and because of your generosity, we continue that fight every single day.

When I walk these halls, I witness something extraordinary: your compassion in action. I see it in the determined eyes of a young man taking his first steps after a spinal injury, in the steady hands of a surgeon refusing to give up after nine hours in the operating room, and in the tears of joy when parents finally take their baby home after 100 days in our neonatal intensive care unit.

Your support doesn’t just fund medical care—it fuels the love, brilliance, and unity that define who we are.

We specialize in tomorrows, and right now, we’re building the future you’ve made possible. Our new hospital in downtown Memphis will represent more than brick and mortar—it’s a promise to save more lives, heal more families, and serve our community with even greater purpose. This isn’t just our vision; it’s yours. Every dollar you’ve invested, every faith you’ve placed in us, every partnership you’ve formed with our mission has brought us to this pivotal moment. Together, we’re not just rebuilding what’s broken—we’re creating something stronger, something that will serve Memphis for generations to come.

Thank you for believing in our fight. Thank you for standing with every patient, every family, and every team member who walks through our doors. Most importantly, thank you for helping us build the tomorrow that Memphis needs.

With deep gratitude,

Tammie Ritchey



“Thank you for helping us build the tomorrow that Memphis needs.”

Tammie Ritchey
Senior Vice President
and Chief Development Officer

A MESSAGE OF GRATITUDE FROM THE CEO

Each day at Regional One Health, we witness moments that remind us why we do this work. A premature baby drawing her first breath and beginning to thrive in our neonatal intensive care unit. A trauma or burn survivor stabilized within minutes by our medical team. A mother receiving not just prenatal care, but the social support she needs to raise a healthy child.

These stories, and countless more, are why we exist. I am filled with gratitude you have chosen to take this journey with us and support the health and wellbeing of this community. Many of our patients arrive in crisis, but they often leave with hope, healing, and a chance at a fuller life. Your support helps make this possible.

At Regional One Health we serve individuals of all ages, at every point in their health journey. Whether it's routine checkups, cancer treatments, complex surgeries, or end-of-life care, our mission remains the same: to provide compassionate care and exceptional services to every person who walks through our doors. This mission is lived out by our nurses, physicians, therapists, social workers, support staff, and more. Everyone at Regional One Health takes this seriously, and it shapes every decision, every interaction, and every life touched.

We are proud of all that we've accomplished together, but we are not standing still. We are looking to the future with bold ambition and deep commitment. Plans are well underway for a new, modernized campus that will allow us to expand services, embrace new technologies, and serve our community for generations to come. This is not just a building. It's a promise to those who will need us tomorrow.

None of this would be possible without our donors, advocates, and partners in this mission. Your belief in our work, your investment in our future, and your unwavering support are helping us build something extraordinary.

Thank you for standing with us. Together, we are healing, helping, and giving hope.



Reginald W. Coopwood, MD
President and CEO

“Your belief in our work, your investment in our future, and your unwavering support are helping us build something extraordinary.”



MEET OUR TEAM



Jared Bulluck
Sr. Development Officer – Corporate
and Foundation Relations



Mary Catherine Burke
Senior Director of Donor Engagement



Allison Catron
Foundation Office Coordinator



Nikki Dean
Manager of Events



Hilliary deGive
Grants Manager



Sarah Behounek Kassen
Director of Prospect Management & Research



Ann Eleece Kouns
Manager, Philanthropic Operations



Samuel McCrimmon
Vice President of Development



Rebecca Mertins
Development Officer



Blake Perkins
Donor Relations Specialist

Envision A New
Regional One Health

Building on our legacy
of care for all, the new
Regional One Health facility
will transform community
health, drive economic
vitality, foster learning
and innovation, and make
a lasting difference for all
patients and families for
generations.



For more about
ONE Campus, see page 19.



2025 BOARD MEMBERS

OFFICERS

CHAIRMAN
John R. Owen, Jr.
Founder/Member,
COR3 Investment Partners, LLC

VICE CHAIRWOMAN
Meredith Martin
Owner,
UPS Store

TREASURER
Jay Healy
Managing Director,
Beacon Pointe Advisors

SECRETARY
Joy Bowen
Senior Vice President &
Treasurer Management Advisor,
Pinnacle Financial Partners

MEMBERS

Louis F. “Bo” Allen, Jr.
Regional President,
West Tennessee, Arkansas,
North Mississippi
First Horizon Bank

Patrick “Trey” Carter
President,
Olympic Career Training
Institute

Linda Ivy-Rosser
Vice President,
Research Director,
Forrester Research, Inc.

Sarah Norton
Chief Counsel – Human
Resources,
International Paper

Ami Austin
Founder/Owner,
Ami Austin Interior Designs

Patricia Emory-Walker
Senior Vice President,
Archer Advertising

Kel Kearns
Chief Executive Officer,
Amplify Cell Technologies

Joel Olson
Vice President,
ARCO

Mark G. Billions
Senior Vice President
Investments,
Stifel

Mark Forrester
Community Volunteer

Octavius Nickson
Founder and President,
Nickson General Contractors

Frank Quinn
Managing Director,
CBRE

Jodie Gilmore
Chief Marketing &
Communications Officer,
Elos Medtech

Priscilla Teixeira
Community Volunteer

FINANCIALS

RAISED JULY 1, 2024 – JUNE 30, 2025

\$9,843,792

\$6,541,462

Grants

\$1,020,172

Community donations

\$1,002,273

ONE Night Gala

\$387,363

Employee donations

\$94,436

Truist ONE Round Golf

\$50,585

Elvis Presley license plate sales

\$27,501

ONE Mile

DONORS BY SOURCE

2,599

Individuals

129

Corporations

11

Foundations

CONTRIBUTIONS BY SOURCE

\$1,513,332

Individuals

\$963,095

Corporations / Organizations

\$611,152

Foundations

YOUR DOLLARS AT WORK

\$1,818,528

Equipment purchases/
facility upgrades
Number includes the land purchase

\$277,952

Patient Support

\$53,411

Scholarships

\$17,017

Center for Innovation

WE'RE SO GOOD AT MAKING IT WORK!



To donate scan the QR Code



Karla Arnold is investing in Regional One Health's future in her roles as nurse, mentor, and leader.

Karla Arnold was expecting her first baby when she started as a nurse at Regional One Health. Today, she is mom (and coach, chauffeur, etc.) to a 13-year-old, 11-year-old, and 9-year-old.

A lot has changed for Karla, but one thing never will: her dedication to her patients and Regional One Health's mission of providing exceptional care for everyone. "Our patients are so diverse, and we take care of you no matter what," she said. "We don't treat one patient different from the next. That's a beautiful thing for an organization to be able to say."

Karla grew up wanting a career in medicine. "I'm the oldest of five, and my mom was a very traditional mama — she just embodied caretaking," she said. "When you take caretaking and add needles and blood and medicine — for me, health care is such a cool field."

She earned her Bachelor of Science in Nursing and started working as a bedside nurse. When she started at Regional One Health, she was blessed with a manager who became a trusted mentor.

"She was one of my biggest supporters as a young nurse and mom," Karla said. "She encouraged me through pregnancy and

breastfeeding and having two more babies. She made Regional One Health such a good place for me."

After several years at our Firefighters Burn Center, Karla joined the nursing float pool, where nurses work a variety of units based on staffing needs. During COVID-19, the needs were often on the Intensive Care Unit, and that is where Karla found her calling.

"We see everything — trauma and burn patients, patients with pneumonia, someone who skipped dialysis for two weeks, heart attacks," she said. "I enjoy being with the sickest patients. You're with them at life-or-death moments every day, and to be that person for someone is rewarding."

Karla approaches each patient and family with a desire to offer what they need in the moment.

"Sometimes working a shift is like being in a play. You have to assess what they need to get their care accomplished, and adjust your personality accordingly," she said. "Some people need you to hold their hand and be their friend. Others need you to lay down the law. Others need you to be an encyclopedia of information. You need to recognize that and adjust quickly."



Karla Arnold is grateful for the opportunities she received as a new nurse at Regional One Health — and she's paying it back through her dedication to patients and the health care system's future. As a bedside nurse and a mentor for nursing students, Karla provides exceptional patient care and helps develop the next generation of providers.

She remembers an elderly woman who had been in the ICU for several weeks. During one of Karla's shifts, the patient went into cardiac arrest.

"I remember holding her hand, and her eyes were so wide — she was so scared," Karla said. "She was a very spiritual person. She prayed every day. I asked her if she wanted us to pray for her, and she blinked her eyes real big — yes. To feel the peace that came over her was so meaningful."

As Karla gained experience, she took on leadership roles, including mentoring nursing students who work at Regional One Health as part of their degree program.

"I get to see them come in like deer in the headlights and walk all the way through to graduation and passing their boards and orientation," she said. "It's neat to be part of their growth and to see them mature, and to support them after they start working here."

Karla looks forward to continuing in her multiple roles at Regional One Health and adding a new specialty: she recently applied for the Certified

Registered Nurse Anesthetist program at University of Tennessee Health Science Center.

She is also excited to join other members of the nursing team to provide input as Regional One Health works toward building a new campus.

"I spent a year at a tiny hospital helping build out the ICU. We literally went around with tape measures marking the outlets and switches. It sounds minor, but it makes such a difference in the nurses' workflow," she said. "It can be something you wouldn't even think of, like if a call light is right behind the head of the bed, someone who is tiny can't reach it."

For Karla, investing in Regional One Health and its future is a natural extension of the caring nature she learned from her mom. She realizes how essential the hospital is not only to individual patients, but to making Memphis and the Mid-South a better place to live.

"I love the patients we care for. I love our team and how we've got each other's backs. I love who we are in the community," she said. "We're so good at making it work!"



To support Regional One Health, visit regionalonehealthfoundation.org

HEALTHIER FAMILIES, ONE MOM AT A TIME!

By connecting new moms to care and resources, Regional One Health is building a stronger community.

Having a healthy pregnancy and baby requires good health care...but it isn't just about health care.

Jehan Ellis, Maternal One Model Program Manager, thinks of it like this:

An expectant mom goes to her prenatal visit. Her doctor tells her to eat healthier. They ask her to monitor her blood pressure. They schedule her next appointment and encourage her to avoid stress because it isn't good for her or her baby.

It's all great advice — until reality intervenes, Ellis said.

"Maybe she lives in a food dessert. A blood pressure monitor costs 50 bucks that she can't spare. She can't find a ride to her next appointment. She's trying not to stress, but she's making minimum wage and she doesn't know where her next meal is coming from," Ellis said. "We talk about health care, but what about her other needs?"

"We need to bridge the gaps between the patient and community resources they need so they can truly improve their health."

Enter the Maternal One Model (MOM) Program, which was started at Regional One Health in August 2024.

Regional One Health Women's Services leaders noted the success of the hospital's ONE Health complex care program, which began in 2018 thanks to Regional One Health Foundation donors. ONE Health made Regional One Health a national leader in complex care by helping vulnerable patients access regular medical care and support for social determinants of health.

"We thought, 'This program is working for the adult population, why not have a program that works for our maternal population?'" Ellis said.

Regional One Foundation applied for and received a grant to provide services to eligible patients who present to the Labor & Delivery Emergency Department. Later, that expanded to include antepartum and postpartum patients who qualify for services.

Ellis said a number of evidence-based factors determine who qualifies for MOM. They include high-risk pregnancy, teen pregnancy, a baby in the NICU, and social determinants of health such as access to housing, food, transportation.

Moms typically check several boxes, Ellis said. Patients enrolled in MOM usually need multiple services and can expect to stay in the program for up to a year.

Moms start by meeting with a social worker to identify their top priorities and work on navigating resources available in the community. As the patient's needs and goals evolve, their social worker reevaluates and offers additional support.

"Our social workers have that wealth of knowledge to make the right referrals," Ellis said. "They can connect moms to food banks and programs to get baby items like diapers, car seats, breast pumps, and formula. They help apply for WIC or disability benefits. They help with housing and transportation to appointments or even to a grocery store if a mom lives in a food dessert."

MOM has helped patients get blood pressure monitors, pay utility bills, and even get supplies for their period.

"Our social workers target what each mom really needs," Ellis said. "We don't just tell her to take care of herself and her baby when she doesn't have the means to do so. We fill those gaps."

In its first year, MOM supported over 150 patients, with new moms enrolling all the time. Ellis can think of numerous success stories.

After a mom showed photos of bullet holes riddling her apartment, social workers helped her with a deposit on rent in a safer neighborhood.

Another mom was connected with Meals on Wheels after she asked to step out of a pediatrics visit so her kids wouldn't overhear her share her concerns about not having enough to eat.

Several dads admitted they were overwhelmed by caring for both their partner and baby until the MOM team stepped in to help.

"This program has meant so much because it provides security," Ellis said. "It helps improve the health not only of our moms and babies, but of the entire household."

The benefit reaches beyond individual lives. Ellis said the long-term goal is to reduce pre-term births and improve maternal mortality and morbidity rates in the Mid-South.

As Regional One Health looks to build a new campus, the MOM program is an opportunity to emerge as a national leader in complex care and maternal care. With that in mind, Ellis and her team are exploring opportunities to fund the program after their grant expires in June of 2026.

"We're looking at ways to continue to provide our moms with what they need. This program benefits moms, families, and the entire community," she said. "It is an alternative model that can really set us apart from everyone else. As we look to the future with a new facility, Regional One Health can set the bar as a leader in maternal care."



To donate scan the QR Code



Regional One Health is honored to partner with the Tennessee Department of Health to secure vital support for mothers through the Practice Transformation and Extension arm of Tennessee's Healthcare Resiliency Program.



To support Regional One Health, visit regionalonehealthfoundation.org

ONE HEALTH COMPLEX CARE DONOR IMPACT REPORT

Our ONE Health complex care program was started after Regional One Health recognized an issue with high emergency department utilization, with a small group of patients accounting for a large percentage of visits and costs.

Complex care programs are designed to better address the needs of patients with multiple health and social

needs who require a coordinated and comprehensive approach. These programs aim to not only improve patient outcomes but also manage healthcare costs more effectively.

ONE Health was initiated and has been primarily funded by philanthropic donations and grants.

SINCE INCEPTION / 2018 DATA:

70%

enrollees are now food secure

192

jobs secured

18,636

rides provided

82% with stable transportation options

10,721

medically tailored home delivered meals

100%

connected to a primary care home

55%

of individuals with open behavioral health domain connected to services

56.2%

of uninsured now have benefits

60%

with open housing/not permanent domain now with stable housing

28,631

prescriptions filled at Regional One Health outpatient pharmacies

FY2025 DATA:

44%

reduction in emergency department visits (active enrollees)

134%

increase in outpatient primary care and specialty visits

62%

reduction in inpatient admissions (active enrollees)

4,136

medically tailored home delivered meals

82% with stable transportation options

2,401

medically tailored home delivered meals

61%

of active individuals with open behavioral health domain connected to services

100%

connected to a primary care home

56.2%

of uninsured patients now have insurance benefits

60%

with open housing/not permanent domain now with stable housing

2,543

prescriptions filled at Regional One Health outpatient pharmacies

44%

reduction in emergency department visits (active enrollees)

1.45

days removed from the average length of stay in the acute care departments

TURNING TRAUMA INTO A **FORCE** FOR **GOOD**



To donate scan the QR Code



Inspired by his care at the Firefighters Burn Center, Aiden Neldon refused to let his injuries define him.

Aiden Neldon was just 18 when his life changed in an instant. While working as an electrician’s apprentice, a serious accident left him with third degree burns over nearly half his body.

It would be easy to define “changed” by his severe injuries, multiple surgeries, or the scars he sees every day. However, that would miss the point of what truly changed for Aiden, and how he is turning the hardest experience of his life into a force for good.

Aiden said the care he received at Regional One Health’s Firefighters Burn Center inspired him to consider a career in medicine. “It changed my whole mindset. I’d love to work with burn patients. I’ve been through it, and I know what to expect — maybe I can help somebody else.”

Aiden was in the first year of his apprenticeship in Jonesboro, Arkansas in January 2024 when he went to work with one of the factory’s master electricians. “It’s funny, because it was snowing outside, so I actually didn’t have to go to work that day,” he remembers.

Eager to learn, he went anyway. The day began with routine tasks before the men went up to the ceiling to work on a busbar, a main electricity source that powers the factory floor.

The routine suddenly turned traumatic when the busbar exploded right next to Aiden: “When it flashes like that, it burns you from the inside to the outside,” he said. “It burned all my clothes off. I was on fire for a couple minutes.”

First responders took Aiden to the Firefighters Burn Center, the only full-service burn center verified by the American Burn Association in a 200-mile radius of Memphis. Thanks to generous donors and the Regional One Health Foundation, the burn center is ready 24/7 with a specialized multidisciplinary team and elite resources dedicated to the care of burn patients’ unique needs.

“I remember being in the hydro room where they clean your burns. They asked me a bunch of questions, and then they knocked me out. From there, the ICU is kind of a blur,” Aiden said.



Aiden suffered third-degree burns over 43.5 percent of his body, from his bellybutton to his ankles, as well as nerve damage in his feet. For a time, there was concern he might lose his legs.

He spent the next three months at the burn center undergoing surgeries to debride and graft his wounds and doing physical therapy to relearn how to walk and perform day-to-day activities.

“Being in the ICU was rough. I’d never been in the hospital before; I’d never been sick,” Aiden said. “I didn’t like being there by myself, and I didn’t know what to expect.”

Support from loved ones and the burn center team kept him going.

Mahmoud Hassouba, MD, PhD, who performed Aiden’s surgeries, was careful to reassure him while also giving him a clear picture of what to expect in terms of outcomes and recovery.

Greg Photopulos, RN and other members of the nursing team became lifelong friends.

“The nurses made it so much better. They’re some of the nicest people I’ve ever met — they kind of became my second family.”

From writing bible verses on the whiteboard in Aiden’s room to just taking time to sit and talk, their compassion made a huge difference.

“The nurses made it so much better,” Aiden said. “They were there during my surgeries. If I needed a small procedure where I wasn’t put to sleep, they’d stand next to me and hold my hand. They’re some of the nicest people I’ve ever met — they kind of became my second family.”



Aiden Neldon suffered severe burns over 43.5 percent of his body while working at his apprenticeship. He spent a grueling three months at the Firefighters Burn Center, finding strength in family and support from a medical team that inspired him to consider a career in patient care.



Sarah Sabbatini, PT, DPT, Cert.DN, Manager of Burn Rehabilitation, helped Aiden regain strength and stamina and keep his skin grafts flexible. “Physical therapy is the hardest part of the recovery process. I basically had to relearn how to do everything,” Aiden said. “They’re not easy on you, that’s for sure, but they’re really good at their job.”

Finally, in April, Aiden was able to go home. He still needed physical therapy, follow-up surgeries, and laser therapy, and he also dealt with the emotional struggles of a traumatic injury.

“I have a lot of PTSD. I have scars everywhere, so I have daily reminders. I have stages of depression,” Aiden said. “I was scared to get out and do stuff. I hadn’t seen my friends in a long time, and I was nervous about what people were going to say about me.”

Aiden pushed through, steadily getting back to the things he enjoys.

“I’m back to hanging out with friends. I go to the gym to work on getting stronger. I’m into working on trucks and going to truck and car shows, and I’m back to the point where I can do that,” he said. “It was hard in the beginning, but you can’t give up. It really does get better.”

Now, that’s a message he hopes to share with other burn patients. He’s looking into shadowing some of his former nurses and pursuing an education and career in burn and wound care.

For Aiden, it would be a chance to return the gift he received when he needed it most.

“They were there for me. They still are,” he said. “They truly care about the healing process and they love seeing how far you’ve come. It makes my day going over there to see them – they never fail to put a smile on my face. I love all of them.”



Help support our burn center! Visit regionalonehealthfoundation.org

INVESTING IN THE FUTURE

This fall, leaders from Regional One Health and Shelby County announced the team for design, engineering, and construction of the health care system’s new campus.

“We’re heralding the beginning of a transformational era for health care and medical innovation in our community,” said President and CEO Reginald Coopwood, MD.

Shelby County Mayor Lee Harris added, “Regional One Health has been here for our community for 200 years, and today we’re ensuring they’ll be here for the next 200.”

The project team boasts both national health care expertise and local acumen.

HDR, based in Omaha, Nebraska, will partner with local firms Self + Tucker Architects, brg3s, METICULOUS, and Cornerstone for architectural and interior design. Memphis Healthcare Buildings, a joint venture between Turner Construction, Flintco Construction, Nickson General Contractors, and Fifer & Associates are providing construction management services.

Seattle-based Magnusson Klemencic Associations is the project’s structural engineering firm, and Irvine, California-based Salas O’Brien will partner with local firm Innovative Engineering Services on mechanical, electrical, plumbing, and fire protection engineering work.

“It’s not just about bringing construction jobs to Memphis, it’s about helping our local businesses thrive over time,” Dr. Coopwood said.

It’s also about serving the health care needs of our community for generations. “We are moving forward, thinking big, and taking bold actions for the future of Memphis and the Mid-South,” Dr. Coopwood said. “This isn’t just about building a hospital, it’s about building hope.”

ONE TEAM



ONE VISION

Building on nearly 200 years of service, Regional One Health is creating a modern Academic Medical Center to safeguard essential care, drive innovation, and prepare Memphis for the next century.

Specializing in Tomorrows means delivering compassionate care, stronger access, and a healthier future for every family in Shelby County and beyond.



Regional One
Health

Specializing in
TOMORROWS



EXPANDING **EXPERT** OB/GYN **CARE**

With your support, Dr. John Schorge is expanding access to expert OB/GYN care

When Dr. John Schorge came to Regional One Health to lead the OB/GYN service, he knew he was stepping into an epicenter of health care disparity in America.

He recalls a conversation with a colleague after seeing a patient with stage 4 cervical cancer. Cervical cancer is preventable, detectable, and treatable when caught early – but lack of access to care meant too many women in the Mid-South were suffering.

“We were talking about the suffering we see from this type of advanced cancer, and I mentioned that it is hard as a doctor to see someone with that kind of burden,” Dr. Schorge recalls. “He said, ‘As a human, it’s hard to see someone with that kind of burden.’”

As both a doctor and human, Dr. Schorge was drawn to Memphis and Regional One Health by the chance to ease that burden.

After nearly four years, he has built a team that is having a major impact on the health of women in our community. With the support of system leadership, Women’s Services providers, and the Regional One Health Foundation, the hospital continues expanding access to expert care.

An early calling

Growing up in rural Michigan, Dr. Schorge didn’t have much exposure to academic medicine. He isn’t sure exactly when his interest in the field was sparked, but the caption next to his senior photo in his high school yearbook states his plans to become a physician.

He studied molecular biology in college and attended medical school at Vanderbilt University in Nashville.

“Like most students, I went into medical school not knowing exactly what I wanted to do. During my OB/GYN rotation, I was inspired by the variety of care that’s provided, and I had role models who ended up going into gynecologic oncology,” he said. “After learning about the need for that expertise across the country, I decided that’s what I wanted to do.”

He attended Harvard University for his residency and fellowship, then started caring for patients as a specialist in gynecologic oncology and complex gynecologic surgery.



Dr. John Schorge came to Regional One Health with the goal of helping address the health care disparities that plague women in the Mid-South. Four years later, Dr. Schorge and his growing team continue to help patients access minimally invasive surgery, complex care, clinical trials, and more.

A chance to make an impact

In 2021, Dr. Schorge was serving as chief of Gynecologic Oncology at Tufts Medical Center and associate director for Cancer Operations at Tufts Cancer Center in Massachusetts when he was approached about leading Regional One Health’s OB/GYN service and helping establish cancer care at the hospital in partnership with University of Tennessee Health Science Center.

On a personal level, the timing was good: his children were grown and spread across the country at universities in California, Florida, and Washington D.C.

Professionally, the opportunity was unmatched.

For one thing, he’d be joining a team that shared his dedication to caring for everyone, regardless of their circumstances. “I was on a Zoom call and one of the residents was in tears talking about how committed the department is to caring for this community,” he said. “I was floored by that emotion. I thought, ‘I want to be part of that spirit, that energy, that effort.’”

Secondly, the impact he could make was enormous.

“Previously, if a woman had a gynecologic cancer diagnosis and came to Regional One Health, they would have to send her across town and hope her insurance was good enough. If she didn’t have insurance, she might not get care at all,” he said. “I asked, ‘If I just walk in the building, I can make sure that same patient can get treatment?’”

“You don’t get that many opportunities in life to have that kind of an impact in a community.”

“We know patients deserve the highest level of care, and that’s what we provide for them.”

To donate scan the QR Code





Building from the ground up

When Dr. Schorge started in early 2022, there was no GYN oncology clinic, patients, or nurse. “It was just me and the idea that we could pull this off.”

He opened his clinic and made sure patients could access surgery, chemotherapy, and radiation treatment. He brought in a nurse dedicated to the gynecologic oncology program and a nurse practitioner to help coordinate medical oncology treatments. An OB/GYN resident and fourth-year medical student were also assigned to the team.

Dr. Schorge praised Regional One Health’s leadership for helping the program grow. “We have been the beneficiary of a lot of energy and effort from the leadership team,” he said.

Support from the Regional One Health Foundation has also been key.

“There are a lot of gaps in health care systems, and the Foundation is pivotal in addressing both short-term needs and long-term initiatives,” he said. “We have social support projects where the Foundation is absolutely critical, and they’ve bought new monitors and blood

pressure cuffs for pregnant patients. It’s both little things and big things that we rely on the Foundation for.”

A big payoff

It’s paying off for women in the Mid-South. “On a daily basis we can point to circumstances where we’re elevating the care in the community,” Dr. Schorge said.

They’ve improved Regional One Health’s rate of minimally invasive hysterectomy to over 90 percent, well above national averages. Black women historically had fewer minimally invasive procedures, which offer a much easier recovery than traditional surgery.

Regional One Health has also grown its reputation as a tertiary care center, meaning patients are transferred from all over the region when they need complex care.

And just recently, Dr. Schorge and UTHSC opened Regional One Health’s first ever gynecologic oncology clinical trial, providing a new treatment option for recurrent or advanced stage endometrial cancer.

Building community through better health

As the OB/GYN program grows alongside Regional One Health’s plans for a new hospital, Dr. Schorge is excited to play a role in strengthening the community he now calls home.

Since moving to Memphis, he’s enjoyed Grizzlies basketball, live blues music, and traveling to sites including Nashville, Civil War memorials, and Eureka Springs.

“Memphis feels like a small town, and I’ve been reminded of how friendly people are in the south. They’re very gracious, including the patients we’re incredibly privileged to serve,” he said. “They are so appreciative about being treated like everybody should be treated.”

Dr. Schorge looks forward to the opportunity to continue to build on that philosophy as Regional One Health plans for its new hospital designed to meet the growing needs of the Mid-South.

“You don’t want to feel like people are left out of the system. You’d like to think that we as a society have the courage to provide the same level of care and appreciate human dignity across the board,” Dr. Schorge said. “At Regional One Health, we know patients deserve the highest level of care, and that’s what we provide for them.”



To support Regional One Health, visit regionalonehealthfoundation.org



THROWBACK **DREAMS,** MEETS **FUTURE** VISIONS

This year at ONE Night, our 90s throwback dreams came true while we raised a glass to a new vision for healthcare. Dr. Coopwood unveiled a plan for raising the standard of care in the Mid-South with a bold mission to become an Academic Medical Center and build a new campus. The dazzling event raised over \$1 million dollars for Regional One Health and the future of our community. Musical guests, including Arrested Development, Montell Jordan, and Tag Team kept guests on their feet all night long.



To donate scan the QR Code



STRIDING TOWARDS HEALING AND HOPE

On January 19, we hosted our annual ONE Mile Championship. This year our race was the first event in the Campbell Clinic Collection and welcomed over 400 participants. The first USTAF-certified 1-mile race in Memphis continues in 2026 on March 14, 2026.



Scan the QR Code to register.



SAVE THE DATE
03.14.26



LIFE-CHANGING **IMPACT** IS PAR FOR THE COURSE

ONE Round continues to set the standard for golf outings in the Mid-South area. As we celebrated another sell-out year with 136 players enjoying a round of 18-holes at Chickasaw Country Club, we welcomed new and returning supporters.



Scan the QR Code to register.



SAVE THE DATE
05.18.26

This year the May event returns to Southwind. Do not miss this opportunity to play, sponsor, and support such a worthy cause.

For more information on sponsorships and tickets, contact Allison Catron at 901-545-6006 or foundation@regionalonehealth.org.



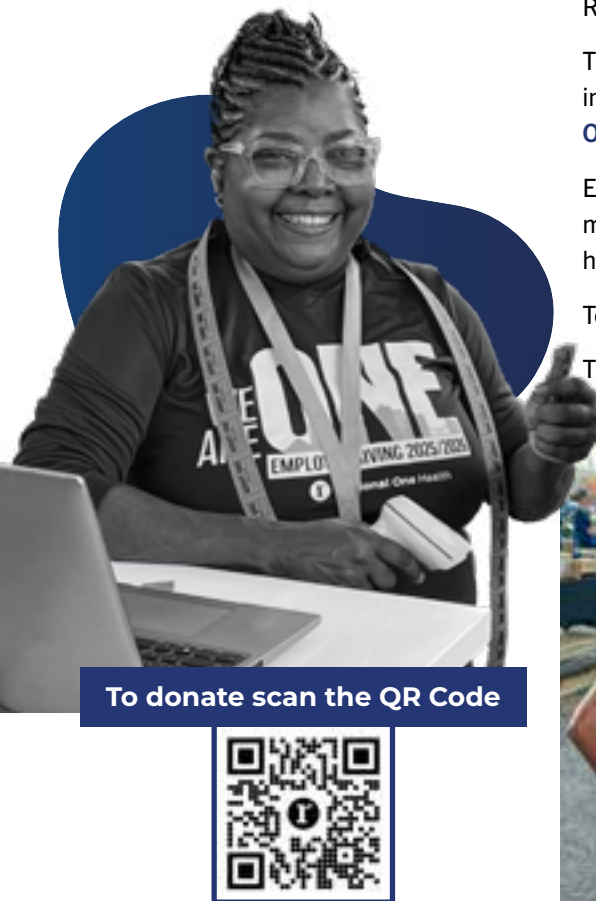
EMPLOYEE **GIVING** HELPS **PATIENTS** WELL-BEING

Regional One Health employees donate \$387,363!

There were 1,764 Regional One Health employees who went above and beyond in support of Regional One Health by donating \$387,363 through the **We Are ONE** Employee Giving Campaign.

Every dollar given stayed within the hospital and was strategically invested in medical equipment, patient care programs, training, and other initiatives to help improve the health and well-being of our patients.

To all the employees who contributed,
THANK YOU!



ABOUT **REGIONAL ONE HEALTH**

Chartered in 1829, Regional One Health is the oldest hospital in Tennessee and oldest business in Shelby County. It has served as a children's hospital, military hospital, maternity hospital, hospital for tuberculosis patients, and more. Today, we are forging a legacy of enhancing health for patients of all walks of life by improving access to advanced medical care.

Regional One Health has touched countless lives in

the Mid-South, and we continue to do so through our commitment to exceptional, compassionate care. We're proud to provide the essential care that improves individual health and the health of our community, and to play a pivotal role in building a bright future for health care.

We offer Centers of Excellence in trauma, burn, NICU and high-risk obstetrics, as well as advanced care in oncology and other specialties.

ELVIS PRESLEY TRAUMA CENTER



Our Elvis Presley Trauma Center, the region's only ACS-certified Level 1 trauma unit hospital within 150 miles radius, is ready 24/7 with a multidisciplinary team and dedicated assessment, operating, recovery, and blood bank resources.

FIREFIGHTERS BURN CENTER



As the only ABA-verified full-service facility for 400 miles, our Firefighters Burn Center provides acute and critical care, specialized rehabilitation, and outpatient treatment to save lives and provide optimal function.

HIGH-RISK OBSTETRICS AND NEONATAL INTENSIVE CARE UNIT



Our Center for High-Risk Pregnancy and Sheldon B. Korones Newborn Center NICU provide the most advanced level of care available in the region for complex pregnancies and critically-ill infants.

ONCOLOGY



In 2025, Regional One Health Cancer Care earned accreditation from the Commission on Cancer, a testament to the fact that it adheres to the most rigorous standards for patient care and outcomes, research, and more.



REMARKABLE **HISTORY** LIFE-CHANGING **LEGACY**

**John Gaston Society honors Regional One Health's founder
by helping donors have a positive impact on patient care.**

Chartered in 1829, Regional One Health is the oldest hospital in Tennessee. Throughout its more than 180-year history, the acute care hospital has evolved significantly, housing a children's hospital, tuberculosis hospital, military hospital, maternity hospital and ultimately the Regional Medical Center, which is home to nationally recognized Centers of Excellence and a commitment to providing quality healthcare to all citizens of the Mid-South.

John Gaston was a successful businessman and philanthropist in Memphis during the late 1800s and early 1900s. Born in France in 1828, Gaston migrated to the United States sometime in the 1850s and landed a job as a waiter at the famed Delmonico's restaurant in New York City. He quickly worked his way up to chef before moving to Memphis in the 1860s. After the Civil War was over, Gaston opened a successful restaurant in Memphis and began accumulating his vast wealth.

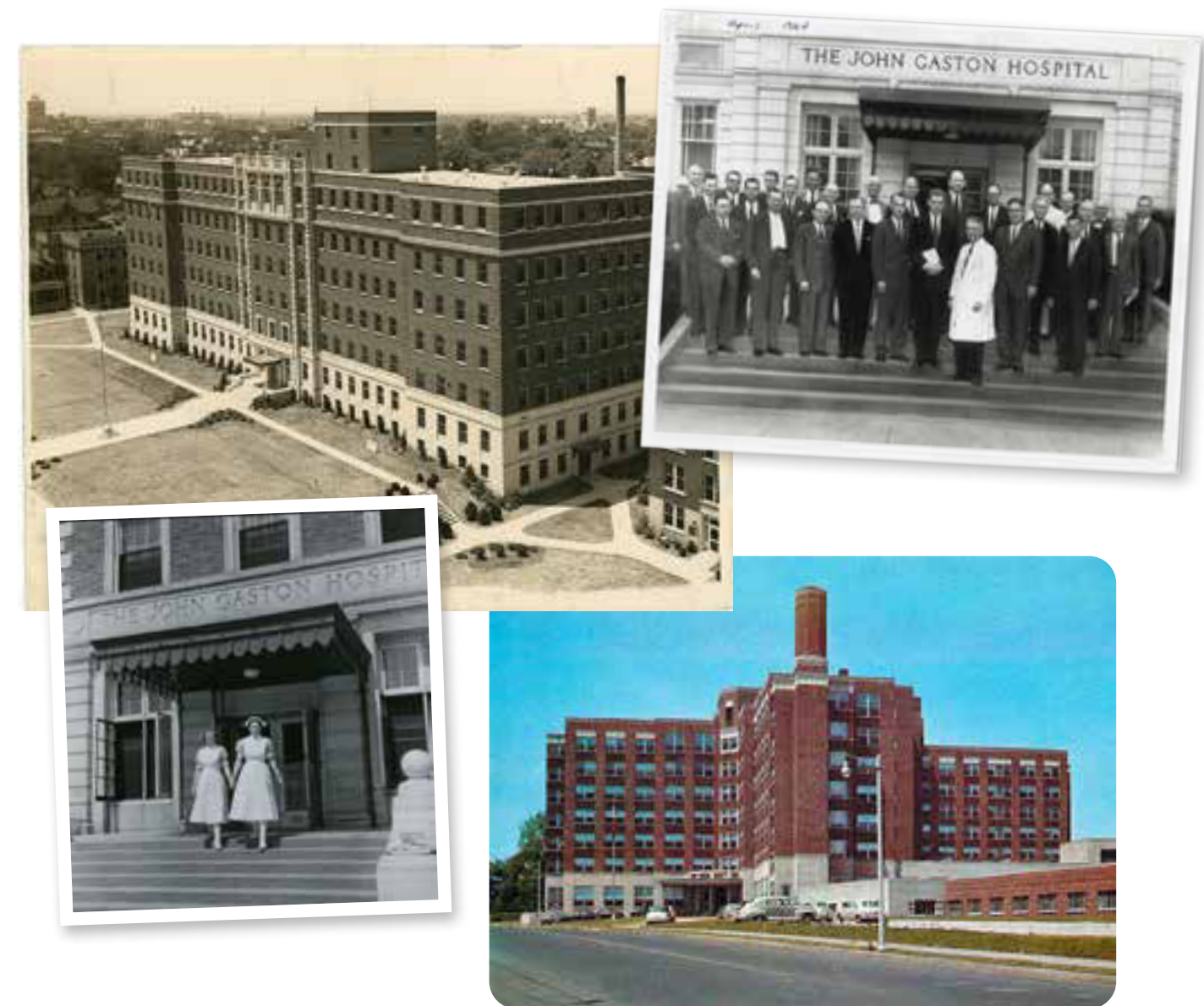
Shortly before he passed away in 1912, Mr. Gaston told several of his friends that he wanted his stately mansion converted into a public hospital following the death of his wife, Theresa Gaston Mann.

After Mrs. Gaston Mann died in 1929, the Gaston mansion was deemed too small to accommodate the needs of a public hospital at that time. So, his home was demolished and turned into a park and a community center. The bulk of his estate was then supplemented by the Public Works Administration to construct a brand-new hospital, which was named in his honor. The John Gaston Hospital remained in operation until the 1990s, when it was razed to make way for expansions at Regional Medical Center.

With the generous gift of his estate, Mr. Gaston created a legacy that lives on today.



Scan the QR Code
to make a Planned Gift



The John Gaston Society has been Established to Recognize Donors Who Make Planned Gifts

The newly formed **John Gaston Society** was created to recognize donors who have made a provision in their estate plan to Regional One Health Foundation. Those who plan their gifts now have the opportunity to become a charter member, helping to ensure the highest quality of healthcare in the Mid-South region for years to come. If you should be included in the John Gaston Society, please use the button below to notify us of your planned gift.

Planned gifts to Regional One Health Foundation can be funded with cash, equity, or appreciated property. A number of state or federal income, capital gains, or estate tax benefits can be realized with a planned gift. Assets such as cash, stocks, bonds, retirement plans, insurance, and trust funds can be given to achieve the donor's charitable goals while maximizing any tax benefits.

In addition to the benefits of making a planned gift to Regional One Health Foundation, donors have the satisfaction of knowing their gift will make a positive impact on the lives of thousands of patients and create a healthier, more vibrant community.

If you are considering making a planned gift, please email us at: foundation@regionalonehealth.org — or visit the **Gifts in Action** pages by scanning the the QR code on page 32.



To support Regional One Health, visit regionalonehealthfoundation.org

THANK YOU TO OUR CORPORATE PARTNERS,
SPONSORS, AND FOUNDATION DONORS*

PARTNERS SOCIETY

Donors who give \$100,000 or more annually.

Community Foundation
of Greater Memphis
The Albert Jay Martin Family
Foundation
The Assisi Foundation of Memphis, Inc.
The Teixeira Family Foundation

AMBASSADOR
SOCIETY

Donors who give \$50,000 or more annually.

Fidelity & Guaranty Life Insurance
Company
First Horizon Bank Foundation
Meticulous
Truist Bank, Inc.
University Of Tennessee
Health Science Center

PILLAR SOCIETY

Donors who give \$10,000 or more annually.

Alliant Insurance
Allworld Project Management
AutoZone
Baptist Memorial Health Care
BlueCross BlueShield of Tennessee
Center for Orthotics & Prosthetics (COP)
Christian Community Foundation of
Memphis and the Mid-South
City of Memphis
Covalus | Allword JV
Dillard's
F&F Construction, Inc.
Fidelity Brokerage Services LLC
Fidelity Charitable
Flintco, Inc.
Higginbotham Insurance Agency
Nickson General Contractors
Omega Healthcare
Orix Capital, LLC
Oteka Technologies, LLC
Semmes Murphey
Southland Casino Hotel
The Hohenberg Charity Trust
The Scheidt Family Foundation
The Turner Construction Company
Foundation
Vizient

FOUNDER'S CIRCLE

Donors who give \$5,000 or more annually.

Allen & Hoshall
AM Diabetes and Endocrinology Center
Amplify Cell Technologies
Butler Snow
Campbell Clinic
CannonDesign
CB Richard Ellis Memphis
Cigna Healthcare
Economic Development Growth Engine
EnableComp
Evolve Bank & Trust
F.L. Crane & Sons, Inc.
Gephart Electric
Harris|Shelton
HDR, Inc.
HOK
Ideas Unlimited
KPFF
KPMG
Learfield Communications, LLC
Merrill Lynch, Pierce, Fenner & Smith
Inc.
Optimum Energy Co, LLC
Pfizer, Inc.
Phelps LLP
Pinnacle Financial Partners
Shelby County Government
Skidmore, Owings & Merrill (SOM)
Smith Seckman Reid
Southern Security Federal Credit Union
Speedy Sales & Services LLC
St. Jude Children's Research Hospital
Stifel
Syntriq Solutions
THERF Mid South Emergency
Planning Coalition
Universal Commercial
University Clinical Health
UT Regional One Physicians (UTROP)
W&T Contracting Corporation
Wells Fargo Clearing Services, LLC

PRESIDENT'S
CIRCLE

Donors who give \$1,000 or more annually.

A2H Engineers • Architects • Planners
American Material Handling

Ameriprise Financial
Archimania
Axios Consulting Group, L
Bass, Berry & Sims
Capitol Resources, LLC
Capta Health Partners, LLC
Compass Group, North America
Donna's Taste of Love
Downtown Memphis Commission
Dunavant Enterprises, Inc.
E4H Architecture
Firemen's Mixed League
First Horizon Bank Foundation
Forrest Spence Fund
Gresham Smith
HKS, Inc.
Huron Consulting Group
Hybrid Byrd
I.C. Thomasson Associates, Inc.
Impact Management Group, Inc.
Innovative Engineering Service, LLC
Jailhouse Rockers of California
Jewish Foundation of Memphis
Johnson Auxiliary Gift Shop
Lockton Companies
MedHaul
Memphis Medical District Collaborative
Development
Memphis River Parks Partnership
Morrison Management Specialist
Olympic Career Training Institute
Raymond James Global Account
Regional One Health Community
Affairs & Customer Experience
Regions Bank
Schwab Charitable
Self +Tucker Architects
Staple Cotton Cooperative Association
Systems Technologies, Inc.
Tacotilian Grill
Tiger Sports Properties
Vistage/The Decisive Element
Wilson Public Relations



*For a complete donor listing,
please scan the QR Code.

IN MEMORY OF

THOMAS BROCKWAY,JR.

Rebecca & John Barton, MD
Beverly & Luke Fortner
Germantown Church of Christ
Carol & Jim Greenwald
Janelle McCoy
Cheryl & Joseph McCormack
Williard Nance
S. Reynolds

PATRICIA COX

Teresa House Hatfield

ELCIE J. FULTZ

Meg Lane

GALE L. HAMANN

Lori & Kent Hansom

SANDRA ISRAEL

Janelle McCoy

MR. AND MRS.
LESTER OSMUN

Sheri Yendrek

MR. AND MRS.
CHARLES PIPLAR

Lee & Bob Harper

ELVIS PRESLEY

Terri Hancock
Charlene Donovan

EDWARD W. REED, MD

Sandra Reed, MD

ROSEMARY W. ROBERTS

Kay Ericksen
Marsha Evans
Cheryl Banks
Tammie Ritchey
Leticia Towns
Cecily W. Tipton
David Tipton

IN HONOR OF

MARY CATHERINE BURKE

Randa Rosenblum
Deborah Tipton

REGINALD W.
COOPWOOD, MD

Imad Abdullah
Susan Cooper
Martin Croce, MD
Linda Hughlett
William Kim
James Proctor
Tammie Ritchey
Randolph Sites
Manoucheka Thermitus
Leticia Towns

Allison Vance
Nicole Washington

BILL CROSBY

Anonymous

THE FORRESTER FAMILY

Lee & Bob Harper

CASEY GLEYSTEN

Olivia DeLozier

EVANS HARTMAN

Joan Hartman

WILLIAM KIM

Margaret Morley

THE OLIVER FAMILY

Lee & Bob Harper

THE OAKS FAMILY

Lee & Bob Harper

ORTHO HAND CLINIC
MEDICAL STAFF

Norfleet B. Thompson, MD

DAVID T. POPWELL

NEXUS Leaders Inc.

THE STUKENBORG FAMILY

Lee & Bob Harper

THE TROTZ FAMILY

Lee & Bob Harper



To donate scan the QR Code



WHY GIVE

Our mission at the Regional One Health Foundation is to advance medical excellence and realize a bright future for health care in Memphis and across a five-state region. Our Foundation raises funds to support special, nonoperational projects throughout the entire Regional One Health system. Your gift brings hope and healing to thousands of patients in our community by helping us purchase state-of-the-art medical technology, provide advanced medical training for our caregivers, and initiate programs to combat various community health issues.



877 Jefferson Avenue | Memphis, TN 38103
regionalonehealth.org/foundation